

## NetRecon™

*Network Vulnerability Assessment with Progressive Scanning Technology*

As enterprise networks grow larger, more dynamic, and more complex, the potential for serious security threats increases exponentially. Symantec NetRecon™ creates risk assessments based on a holistic network view, helping protect systems and networks by identifying common security vulnerabilities before an intruder can exploit them and attack.

### > Discover and Assess Network Vulnerabilities

NetRecon is a network vulnerability assessment tool that discovers, analyzes, and reports security holes by automatically scanning and probing systems and services on the network. It safely simulates common intrusion or attack scenarios to identify and report network vulnerabilities, while suggesting corrective actions. Administrators can schedule a scan from within the easy-to-use interface and view scan progress and results immediately in the real-time graphical display.

### > Progressive Scanning Learns from Experience

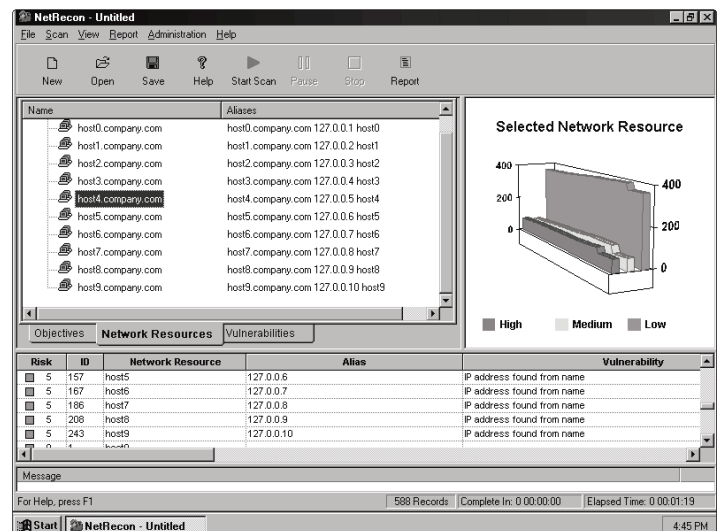
NetRecon utilizes a unique, patent-pending, progressive scanning technology to gather vulnerability information in parallel and share it between components. NetRecon learns about the network as it scans, adapting the penetration strategy based on previously gathered results. For instance, if NetRecon cracks a password on one system, the password is then tried on the other systems, resulting in a more thorough assessment and a deeper discovery of weaknesses. Frequent security updates via Symantec LiveUpdate provide even more protection with the latest vulnerability signatures and alerts.

### > Understand the Exact Cause of Vulnerabilities

NetRecon provides a systematic understanding of the causes of vulnerabilities, showing the exact sequence of steps an intruder might take to discover and exploit vulnerabilities. As the only solution that provides root cause and path analysis, NetRecon helps administrators identify exactly where to correct a system vulnerability in order to enforce corporate security policies.

### KEY POINTS

- > Scans multiple operating systems, including UNIX®, Linux®, Windows 2000®, Windows NT®, Windows® 95/98 and NetWare®
- > Scans using many Windows NT/2000 network protocol such as TCP/IP, IPX/SPX, and NetBEUI
- > Tests servers, firewalls, routers, hubs, switches, name services, network printers, Web servers, and other network devices
- > Integrates with Enterprise Security Manager™ (ESM) for complete host and network assessment and policy compliance
- > Displays scan progress with a real-time graphic view
- > Stays current with the latest security updates



Path analysis illustrates the exact sequence of steps that are taken to uncover vulnerabilities.

> **Flexible Reporting Capabilities**

NetRecon allows administrators to generate management reports tailored for a range of audiences—both technical and executive. Users can create customized reports using Crystal Reports, and export to a variety of formats including Word, Excel, and HTML.

**SYMANTEC NETRECON IS A KEY COMPONENT OF SYMANTEC ENTERPRISE SECURITY. SYMANTEC ENTERPRISE SECURITY COMBINES WORLD-CLASS TECHNOLOGIES, COMPREHENSIVE SERVICES, AND GLOBAL EMERGENCY RESPONSE TEAMS TO HELP BUSINESSES RUN SECURELY AND WITH CONFIDENCE.**

**SYSTEM REQUIREMENTS**  
NETRECON™ 3.5

- Windows NT® 4.0 workstation or server with service pack 3 or greater
- Windows 2000® workstation or server (supported since NetRecon 3.0 with Security Update 7 or greater)
- 96 MB RAM
- 40 MB disk space

**WORLD HEADQUARTERS**

20330 Stevens Creek Blvd.  
Cupertino, CA 95014 U.S.A.  
1.408.253.9600  
1.800.441.7234

[www.symantec.com](http://www.symantec.com)

**For Product Information**  
In the U.S., call toll-free  
800.745.6054 for  
more information.

Symantec has worldwide  
operations in 36 countries.  
For specific country  
offices and contact numbers  
please visit our Web site.