

# Check Point Express

## Security You Don't Have To Worry About

### SOLUTION HIGHLIGHTS

- Comprehensive security for company resources with market-leading FireWall-1
- Network and application-level attack protection with integrated SmartDefense
- HA-ready for better business continuity
- Range of remote access options with VPN-1 SecuRemote/VPN-1 SecureClient
- Streamlined, centralized management with SmartCenter
- Available on a range of platforms for superior performance

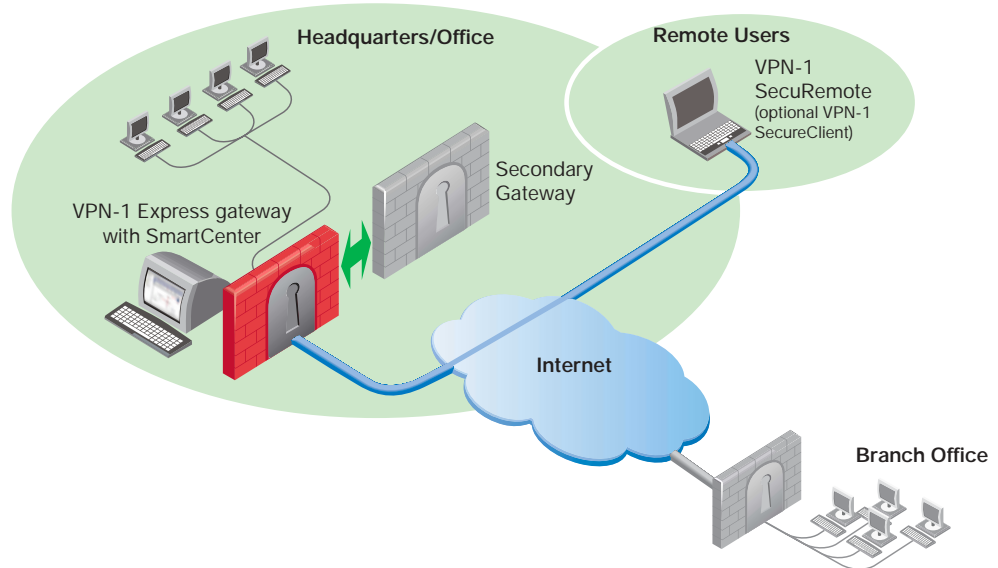
### Challenge

As a business with up to 500 users, you need to provide a flexible, secure network infrastructure to connect all your locations and users. The Internet provides a flexible and cost-effective networking environment. However, to make it a secure networking environment, you need a solution that:

- Provides the highest level of security for the entire network while being simple to implement
- Securely connects all business communications and resources at all times
- Streamlines management and maintenance without adding administrative overhead

### The Right Solution

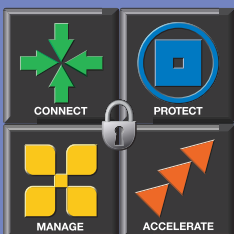
Check Point Express™ delivers superior security to businesses with up to 500 users. It is the industry's most comprehensive solution designed to deliver "worry-free" security to businesses that have limited security resources. By including the highest levels of access control, integrated attack protection, VPN connectivity and powerful centralized management, you get end-to-end security in a single solution. In addition, Check Point Express is HA-ready, which makes security deployments more resilient, ensuring round-the-clock business continuity. You can extend Check Point Express to secure additional sites and users, resulting in a security solution that scales with the network while providing superior investment protection.



Check Point Express provides end-to-end security and connectivity for the business with up to 500 users and multiple branch offices.

### CHECK POINT EXPRESS INCLUDES:

VPN-1 Express gateway	Protection for business communications over the Internet using VPN technology
VPN-1 SecuRemote	Protection for remote access VPN users
FireWall-1	Market leading, enterprise-class security
SmartDefense	Integrated network and application-level attack protection
SmartCenter	Centralized management for all aspects of security



## INTEGRATED SECURITY FOR MAXIMUM PROTECTION

### Highest Level of Access Control

Check Point Express includes market-leading FireWall-1® to secure all popular Internet services with Check Point's patented Stateful Inspection. FireWall-1 supports more than 150 pre-defined applications, services, and protocols out of the box, including Web applications, instant messaging, peer-to-peer applications, VoIP, Oracle SQL, RealAudio, and multimedia services such as H.323.

### Built In Active Defense Against Attacks

SmartDefense™, as part of Check Point Express, actively protects organizations from known and unknown network and application attacks, using Stateful Inspection and Application Intelligence™. It integrates with Check Point's SMART management and reporting infrastructure to provide a single, centralized console for real-time monitoring of attacks as well as attack detection, blocking, logging, auditing, and alerting. Attack protection capabilities integrated into the security solution minimize the need for a company to make capital investments in additional traffic monitoring products.

### Out-of-the-box Strong Authentication

Organizations that want to implement strong authentication "out of the box" can use Check Point One-Click Certificates. With an Internal Certificate Authority included with the Check Point Express, X.509 digital certificates can be issued to VPN-1® Express gateway and remote access users. One-Click Certificates provide industry-standard, two-factor authentication without the complexity and expense of PKI systems.

## QUICK VPN DEPLOYMENT

### Simple VPN Creation

With One-Click VPNs, VPNs can be created with a single operation. By defining VPN communities, organizations can set the security parameters for an entire VPN, including site-to-site and remote access — in one step. By simply defining all Check Point Express end points in a community, VPNs are automatically enabled among all gateways or between a gateway and a remote user. As new sites are added to the community, they automatically inherit the appropriate properties and can immediately establish secure IPsec sessions with the rest of the VPN community.

### Strongest Levels of Encryption

Beyond ensuring that network access is secure, a security solution must protect the privacy of the data being transmitted. By adhering to the IPsec standard, Check Point Express automatically negotiates the strongest possible encryption and data authentication algorithms available between communicating parties. This includes 128-256 bit Advanced Encryption Standard (AES) and 56-168 bit Triple DES algorithms for data encryption.

## ROUND-THE-CLOCK BUSINESS CONTINUITY

Check Point Express is "high-availability ready" to ensure that company resources are always available. Multiple gateways may be deployed in a cluster to guarantee round-the-clock network availability. If the designated primary gateway becomes unreachable, all connections are seamlessly redirected to the remaining cluster members. Also, near linear performance gains are achieved when additional gateways are added to the cluster.

In addition, interface high availability enables traffic to be routed to a secondary interface or ISP link if the primary interface becomes unavailable. Ongoing connections are maintained during failover.

### Support for VPN Quality of Service (QoS)

Check Point's FloodGate-1®, an optional module, shapes VPN traffic by assigning priority to business critical applications and users. It delivers optimized performance, enabling customers to migrate business traffic from expensive leased lines to Internet VPNs.

## RANGE OF REMOTE ACCESS OPTIONS

Check Point provides multiple remote access solutions to enable off-site employees to securely connect to company resources.

### VPN-1 SecuRemote

VPN-1 SecuRemote™, included with Check Point Express, encrypts and authenticates data to protect against eavesdropping and data tampering.

### VPN-1 SecureClient

VPN-1 SecureClient™ extends VPN-1 SecuRemote features with a centrally managed personal firewall and advanced management capabilities.

### Support for Clientless Remote Access Technologies

Check Point Express supports clientless (SSL-based) VPNs that are available via commonly used web browsers, and L2TP VPN clients built into standard operating systems. This eliminates the need to invest in other solutions to support additional remote access technologies.

### SIMPLE, CENTRALIZED SMART MANAGEMENT

SmartCenter Express is part of Check Point's SMART (Security Management Architecture) portfolio of solutions and manages VPN-1 Express gateways. It centrally stores and distributes the security policy to the entire security infrastructure. Maintaining the security policy in a centralized location eliminates the need to maintain each VPN-1 Express gateway individually thereby reducing administrative burden and errors.

Administrators use SmartDashboard™, the simple user interface for SmartCenter Express, to define and manage multiple elements of a security policy: firewall security, VPNs, network address translation, QoS and VPN client security.

### SUPERIOR PERFORMANCE

Check Point supports a range of deployment options to deliver a solution that best fits the performance needs for networks of any size.

- “Secured by Check Point” appliances come with pre-installed Check Point software
- SecurePlatform, included on the Check Point solution CD, installs a customized, hardened operating system and Check Point software in less than 10 minutes
- Available on Intel-compatible Windows and Linux servers as well as Sun Solaris servers

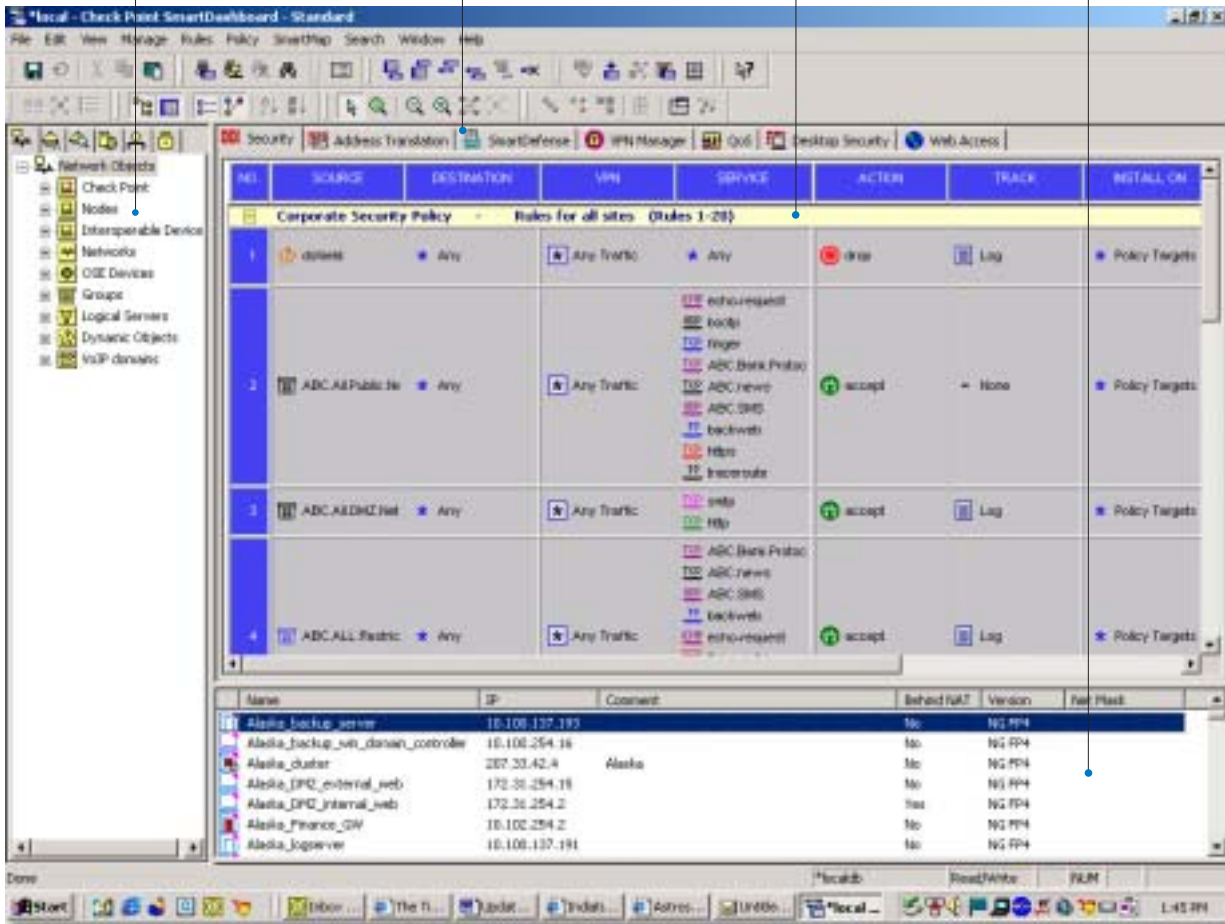
For a list of recommended platforms, visit us online at [www.checkpoint.com/products/protect/platforms.html](http://www.checkpoint.com/products/protect/platforms.html)

Objects tree contains all objects — for users, hosts, networks, and more

Centralized configuration of network and application level attack protection

Rule base manages firewall, NAT, QoS, VPN, desktop security and Web Access policies

Objects list provides easy access to the most commonly used objects



SmartDashboard is a single graphical user interface used to define and manage multiple elements of an organization's security policy.

## ADDITIONAL CAPABILITIES

Check Point Express supports a number of different enforcement modules, including the following:

**Additional VPN-1 Express gateways** secure and connect an additional branch office

**High-Availability Ready VPN-1 Express gateways** provide a seamless way to add greater resiliency to an existing security gateway

**Performance Accelerator Cards** are plug and play PCI add-in cards that improve the performance of existing VPN-1 Express gateways

**VPN-1 SecureServer** provides protection for individual application servers and secures confidential client-server communications

Check Point Express supports the following add-ons:

**SmartMap™** allows security managers to validate the integrity of their security by providing a detailed, graphical map of an organization's security deployment.

**SmartUpdate™** delivers centralized software and license management for Check Point products to ensure that a consistent security policy is enforced throughout the enterprise network.

**SmartDirectory™** enables Check Point Express to integrate with one or more LDAP-compliant directory servers.

**SmartView Monitor™** enables powerful performance analysis by presenting graphical views of end-to-end performance metrics such as bandwidth, round trip time, and packet loss.

**SmartView Reporter™** is an optimal reporting system that delivers in-depth network security activity and event information from Check Point log data.

**UserAuthority™** provides integrated web security, single sign-on and identity management for eBusiness applications.

## SYSTEM REQUIREMENTS

VPN-1 Express gateways are supported on:

Windows NT/2000 Server, Sun Solaris, Linux, Check Point SecurePlatform, Nokia IPSO, AIX

Disk Space: 40MB  
Memory: 128MB

SmartCenter Express management server is supported on:

Windows NT/2000 Server, Sun Solaris, Linux, Check Point SecurePlatform, Nokia IPSO, AIX

Disk Space: 40MB  
Memory: 128MB

SmartDashboard is supported on:

Windows NT/Server/XP/ME, Sun Solaris

Disk Space: 55MB  
Memory: 128MB

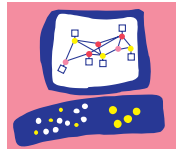
VPN-1 SecuRemote/Secureclient are supported on:

Windows NT/2000 Server/XP/ME/CE, Macintosh, Linux

Disk Space: 20MB  
Memory: 64MB

For detailed information on supported platforms and system requirements please refer to:  
[www.checkpoint.com/products/supported\\_platforms/platforms\\_appint.html](http://www.checkpoint.com/products/supported_platforms/platforms_appint.html)

Check Point  
SOFTWARE TECHNOLOGIES LTD.



We Secure the Internet.

©2003 Check Point Software Technologies Ltd.

All rights reserved. Check Point, the Check Point logo, ClusterXL, ConnectControl, FireWall-1, FireWall-1 GX, FireWall-1 SecureServer, FireWall-1 SmallOffice, FireWall-1 VSX, FireWall-1 XL, FloodGate-1, INSPECT, INSPECT XL, IQ Engine, Open Security Extension, OPSEC, Provider-1, SecureKnowledge, SecurePlatform, SecureXL, SiteManager-1, SmartCenter, SmartCenter Pro, SmartDashboard, SmartDefense, SmartLSM, SmartMap, SmartUpdate, SmartView, SmartView Monitor, SmartView Reporter, SmartView Status, SmartView Tracker, SVN, UAM, User-to-Address Mapping, UserAuthority, VPN-1, VPN-1 Accelerator Card, VPN-1 Net, VPN-1 Pro, VPN-1 SecureClient, VPN-1 SecuRemote, VPN-1 SecureServer, VPN-1 SmallOffice, and VPN-1 VSX are trademarks or registered trademarks of Check Point Software Technologies Ltd. or its affiliates. All other product names mentioned herein are trademarks or registered trademarks of their respective owners. The products described in this document are protected by U.S. Patent No. 5,606,668 and 5,835,726 and may be protected by other U.S. Patents, foreign patents, or pending applications.

PN 501058